





BANC-LOK are press-in expansion inserts which, due to their diamond knurl pattern, give minimum penetration of the sides of the hole without sacrificing pull-out resistance. This makes them ideally suitable for applications into hard thermosetting plastics. Headed and reverse headed versions are also available.

ADVANTAGES

-  EASY PRESS-IN INSERTION
-  SELF-LOCKING ACTION ON THE SCREW - IDEAL WHERE VIBRATION IS PRESENT
-  SUITABLE FOR MOST THERMOSETTING PLASTICS
-  CHOICE OF LENGTHS AVAILABLE



DESIGN GUIDE

HOLE PREPARATION

Moulded holes are recommended wherever possible. The taper on a moulded hole should be 1° inclusive and the hole diameter recommended should apply at the point reached by the bottom of the insert. The top of the hole should not be chamfered or counterbored and care must be taken to avoid bell mousing. Drilled holes may be used but performance may be reduced when compared with a moulded hole. Hole diameter tolerance -0.00 +0.10mm.

SELECTION OF INSERT TYPE

Headed inserts may be used for improved electrical contact or to fill gaps which would result in a jack-out condition. Alternatively a reverse headed type may be used with the head on the back of the moulding. This head then gives extra support for resistance to jack-out loads.

These inserts are not recommended for use in thermosetting polyesters with high filler content (DMC, SMC, BMC), for applications using these materials we recommend Screw-Sert see page 18.

INFLUENCE OF SCREW DIMENSIONS

It is important that the fixing screw fully penetrates the insert in order to achieve full expansion. Screw length should therefore be calculated to ensure that this condition is met before the final clamp torque is applied.

PERFORMANCE DATA

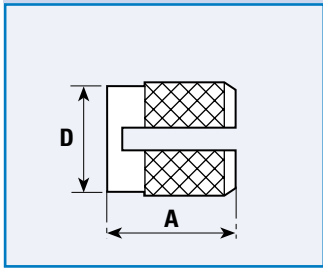
The complexity of materials and variations in service conditions make it impossible to detail fastener performance for specific applications. The charts on page 29 give a general guide.

Note: Due to the manufacturing process a slight burr may be present on the slotted face of the insert.

TECHNICAL DATA

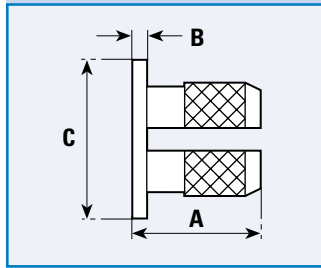
BANC-LOK

INSERTS



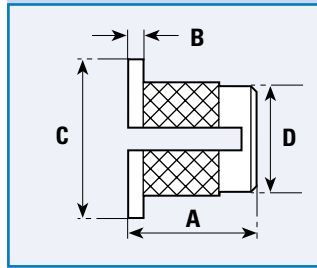
Product Code N41

HEADED INSERTS



Product Code N42

REVERSE INSERTS



Product Code N42R

STANDARD MATERIAL - Brass (B) - Other materials possible on quotation

DIMENSIONS

INTERNAL THREAD SIZES		A	A*	B	C	D	Rec. Hole Size	Min. Wall Thickness
Unified	ISO Metric	mm	mm	mm	mm	mm	-0.00 +0.10 mm	mm
2	2	3.9	-	0.43	4.8	3.2	3.2	2.4
-	2.5	4.7	-	0.51	5.5	4.0	4.0	3.2
4	3	4.7	3.5	0.51	5.5	4.0	4.0	3.2
6	3.5	6.3	3.5	0.66	6.4	4.7	4.8	3.6
8	4	7.9	5.0	0.82	7.1	5.5	5.6	4.0
10	5	9.4	6.0	0.99	7.9	6.3	6.4	4.8
1/4	6	12.6	9.5	1.25	9.5	7.9	8.0	6.0
5/16	8	12.6	9.5	1.25	11.1	9.5	9.6	7.0

A* - Preferred shorter lengths
Other lengths possible on quotation.

HOW TO SPECIFY

INSERTS

PRODUCT CODE	N41-B-M3
MATERIAL	N41-B-M3
THREAD SIZE	N41-B-M3
LENGTH (if applicable)	N41-B-M3-3.5

HEADED INSERTS

PRODUCT CODE	N42-B-M3
MATERIAL	N42-B-M3
THREAD SIZE	N42-B-M3
LENGTH (if applicable)	N42-B-M3-3.5

REVERSE INSERTS

PRODUCT CODE	N42R-B-M3
MATERIAL	N42R-B-M3
THREAD SIZE	N42R-B-M3
LENGTH (if applicable)	N42R-B-M3-3.5

NOTE:

It is not necessary to specify a length where a standard insert is required.
If the application requires a shorter than standard insert they may be selected from the table above (A*).

BANC-LOK™ INSERTS

